



Glasgow Caledonian University
Students' Association

Our Values

Diversity

We are proud of our diverse student body and are dedicated to activities that celebrate this diversity.

Community

We foster a welcoming and inclusive environment, allowing students to form and build upon strong, lasting relationships that contribute into an enjoyable and productive University life.

Participation

We promote and provide the opportunity for widespread involvement through sports, societies, volunteering and in all our activities.

Fun

We are dedicated and passionate about the professional nature of working for students whilst maintaining a fun and friendly atmosphere.

Support

We provide a high level of consistent, reliable, confidential and independent support, ensuring the welfare of all our students.

Leadership

Throughout all our activities we encourage students to become leaders, to take pride in their university and fellow students, enabling them to be outstanding graduates.

What will success look like?

The Students' Association will be recognised as being a legitimate and effective campaigning organisation by our members, the university and the sector and that we improve the lives of our members. Our members will know what the Students' Association does, will feel they receive the right level of communications and feel that their feedback is acted upon. Our members will have fun through a variety of activities, feel part of the GCU and local community, feel proud of their Students' Association and find it easy to seek support from the Students' Association. Finally, our members, the university and employers will feel that the Students' Association employability programme has positively impacted on our members' employability.

We will measure our success through our annual Student Satisfaction Survey, the National Student Survey and International Student Barometer scores, achieving awards and through increased involvement levels.

Find out more about our Strategic Plan by visiting
www.caledonianstudent.com/thebigplan

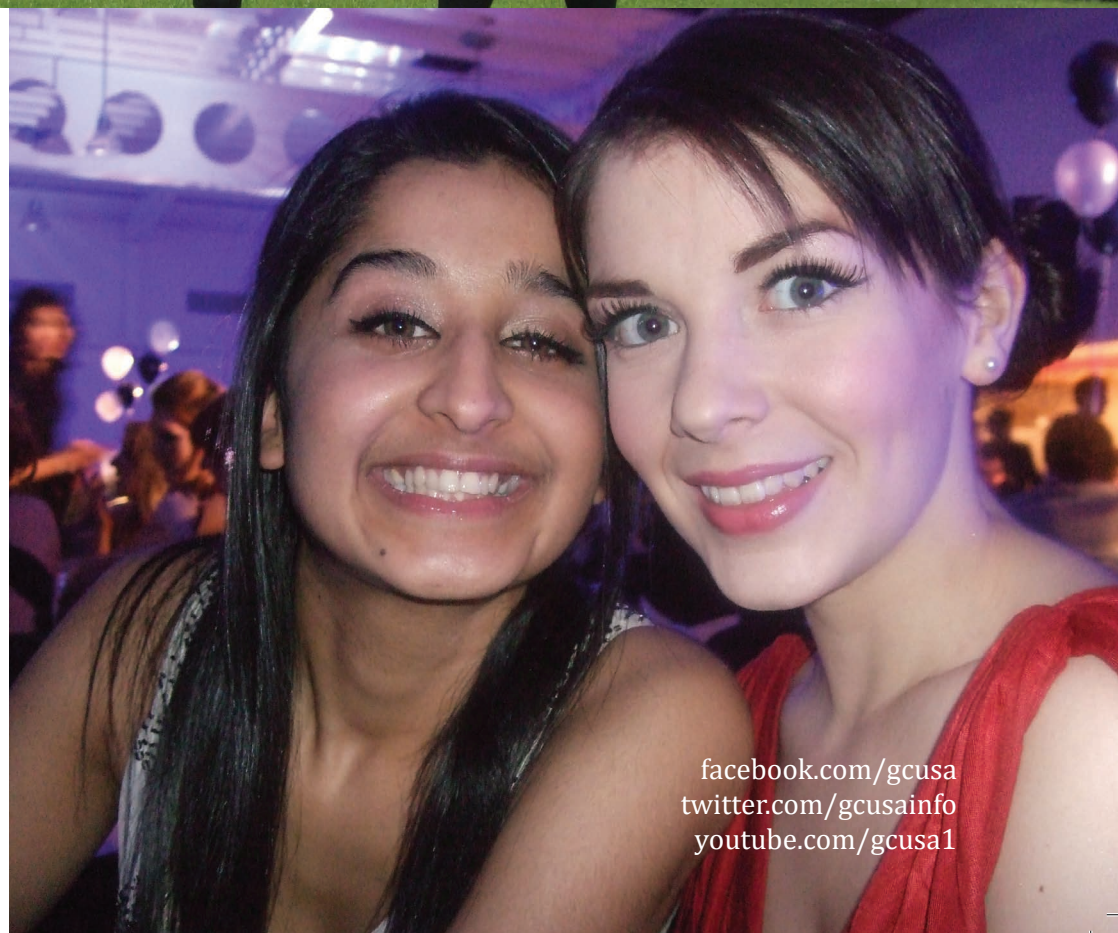


Glasgow Caledonian University
Students' Association
Scottish Charity No. SC022887

Glasgow Caledonian University Students' Association
70 Cowcaddens Road, Glasgow, G4 0BA.

Website: www.caledonianstudent.com
Telephone: 0141 331 3886
Email: studentsassociation@gcu.ac.uk
Fax: 0141 331 3363

Glasgow Caledonian University Students' Association is a registered Scottish charity, number SC022887.



facebook.com/gcusa
twitter.com/gcusa1info
youtube.com/gcusa1



What we are trying to achieve?

That GCU students will have an outstanding experience that will live with them forever. This is our Vision.

Why do we exist?

Our Mission is to represent and enable GCU students to enhance all aspects of their student experience.



Where are we now?

In the academic year 2010-11 we talked to all our stakeholders, most importantly our members and identified how the Students' Association could be improved and could better meet its Mission and Vision.

We were told that we need to be a more legitimate, representative and campaigning organisation through identifying our members' needs, being more evidence based, having effective representative structures and being more accountable to our members.

We discovered we need to be better at communicating with our members and to make our communications more professional, structured and targeted. We learnt that our members think the Students' Association Building is improving but more work should be done to build a fun and supportive community on campus. Lastly our members felt their future employability was key and we should focus on growing the Student Leaders Programme and other employability initiatives.

What will we do?

To help us achieve our Mission and Vision we have The Big Plan 2014. This is our three year Strategic Plan that has four Strategic Themes:

1. Effectively Representing our Members
2. Communicating Effectively with our Members
3. Developing a Fun and Supportive Community for all our Members
4. Developing our Members Employability

In order to support these Strategic Themes we must ensure long term financial and environmental sustainability, good people management and strong partnership working.

