

# Student Voice Induction 2018/19

# Objectives

**By the end of this session participants will be able to:**

- Describe the activities and services of GCU Students' Association
- Know how the Governance, Democracy and Operations of the organisation inter-relate and the Governance Structure
- Know that Students' Associations exists due to the Education Act 1994
- Detail our Mission, Vision, Values and Strategic Plan
- Describe the purpose of Student Voice
- List the members of Student Voice
- Know how to submit or vote on an Idea
- Describe how to get involved in debates and hold Officers are held to account
- Describe how to submit apologies for meetings
- Know meeting practicalities

# GCU Students' Association

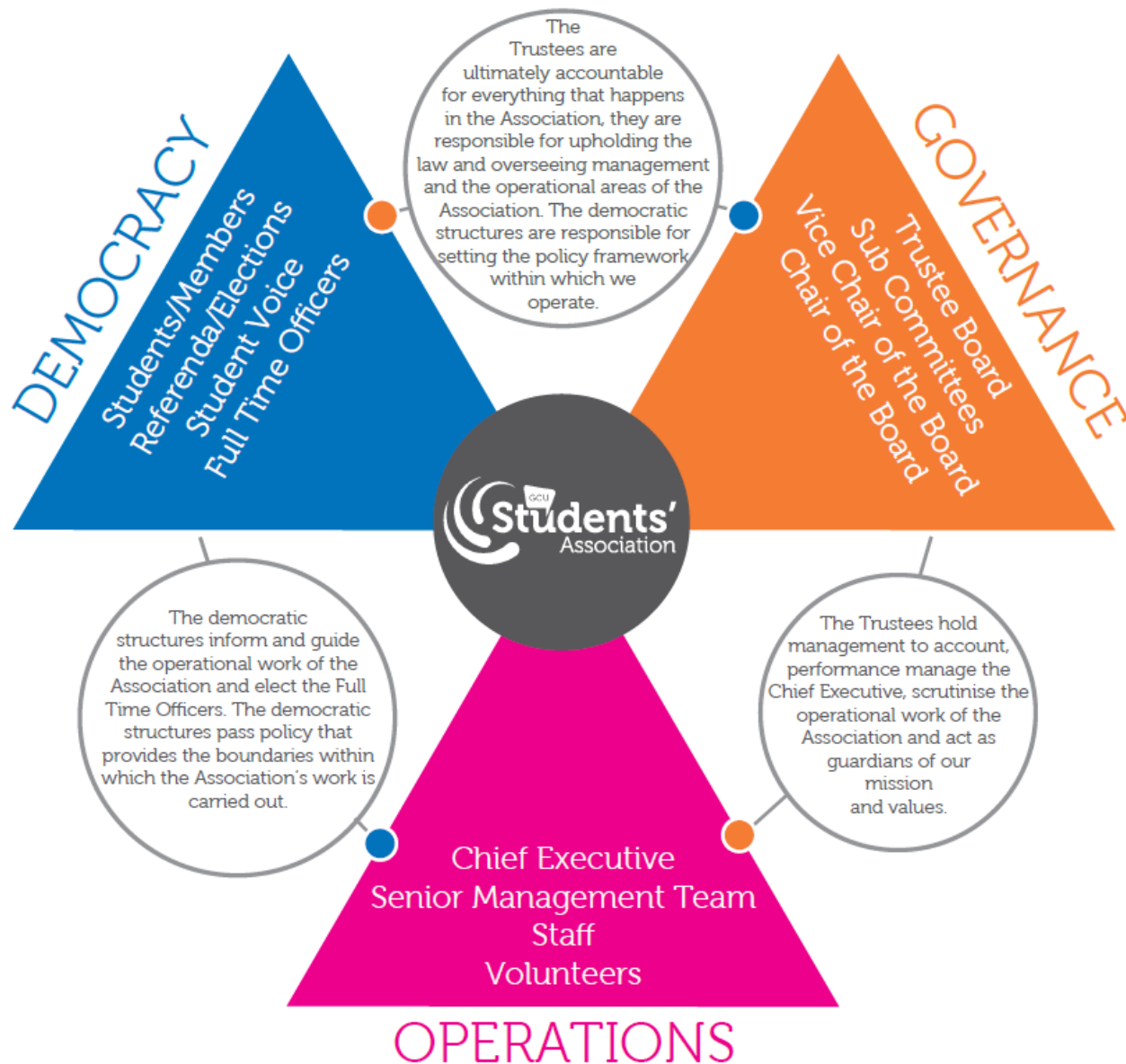


Click to watch the video to find out more about the services and activities that we provide. We are a member-led organisation.



[https://youtu.be/9ghg9DO\\_gQ0](https://youtu.be/9ghg9DO_gQ0)

# Governance, Democracy and Operations



**GCU Students' Association is split into 3 different areas – Democracy, Operations and Governance.**

Each part plays a different role in our decision making.

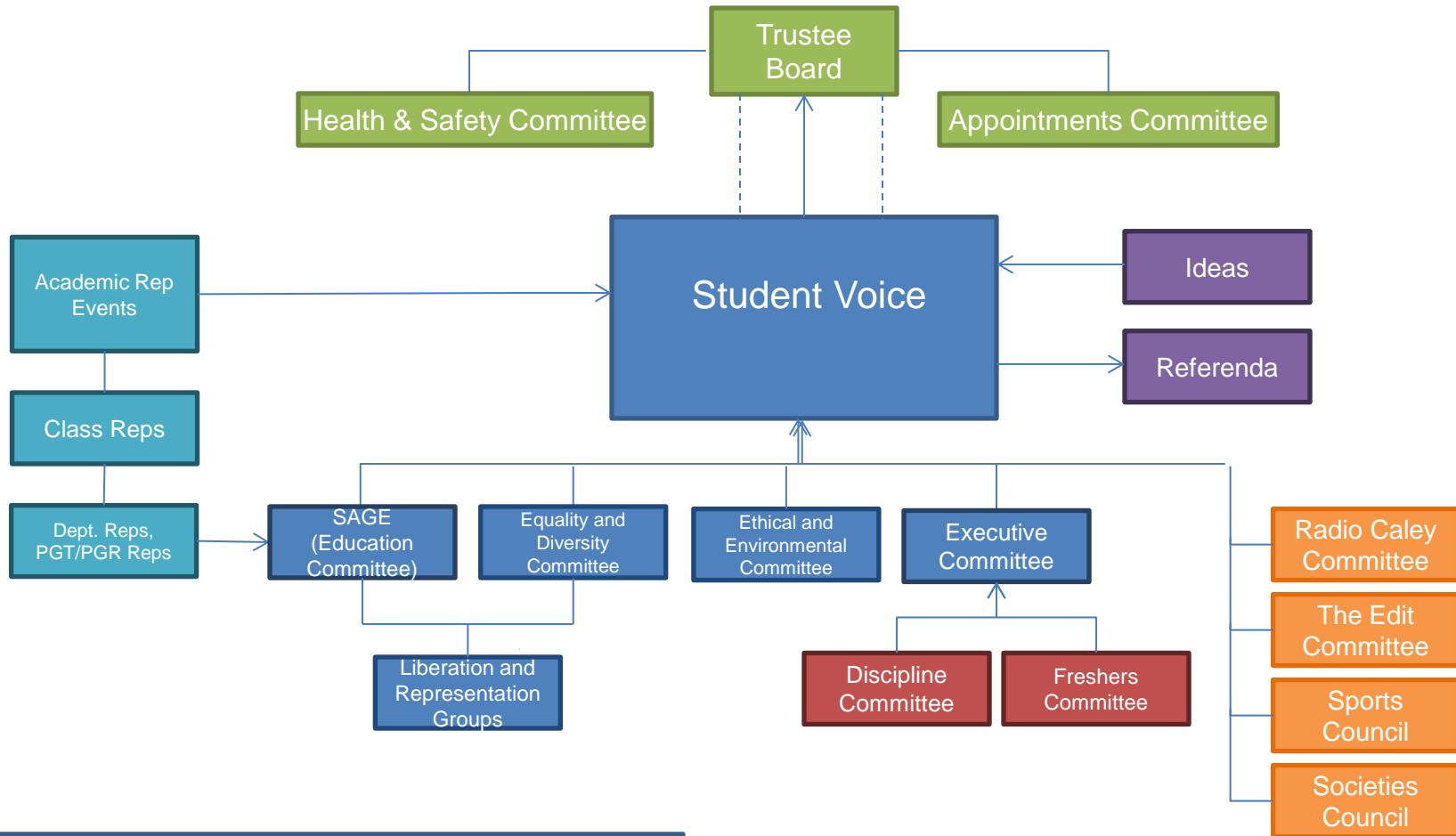
# Governance, Democracy and Operations

Click to watch the video that explains the difference between democracy, governance and operations and how these inter-relate to each other. It also covers our Staff Student Protocol and Equality and Diversity.



<https://youtu.be/zDAYYkRZmbU>

# Students' Association Governance Structure



**This is our Governance Structure.** The Trustee Board have ultimate legal responsibility for GCU Students' Association as a Charity.

Governance is 'the systems and processes concerned with ensuring the overall direction, effectiveness, supervision and accountability of an organisation'.



# Education Act 1994



A Students' Association is defined in the Education Act 1994 as..  
*“promoting the general interests of its members”*

Section 22 of the Act outlines legal responsibilities that the University has for the Students' Association and to ensure we  
*“operate in a fair and democratic manner and is accountable for its finances”*



# Mission and Vision



## Our Vision:

That GCU students will have an outstanding experience that will live with them forever

## Our Mission:

To represent and enable GCU students to enhance all aspects of their student experience





# Our Values

- **Diversity**



- **Fun**



- **Community**



- **Support**



- **Participation**



- **Leadership**



# The Bigger Plan 2020

Click to watch the video that explains our strategic plan.



<https://youtu.be/st-1ydsxfBQ>

# Purpose of Student Voice



**Student Voice exists to represent the interests of GCU students from across all programmes.**

- Approves Ideas (ie Motions) that becomes our policy for 5 years
- Approves Minutes and Policy Documents from Student Voice Sub Committees
- Approves changes to our rules (Constitution, Schedules, By-Laws) and our Policies
- Holds elected Officers to account
- Approves External Affiliations
- Approves Honorary Life Members
- Elect members to sit on GCU and Students' Association Committees



Members are encouraged to ask questions or getting involved in debates before being asked to vote.

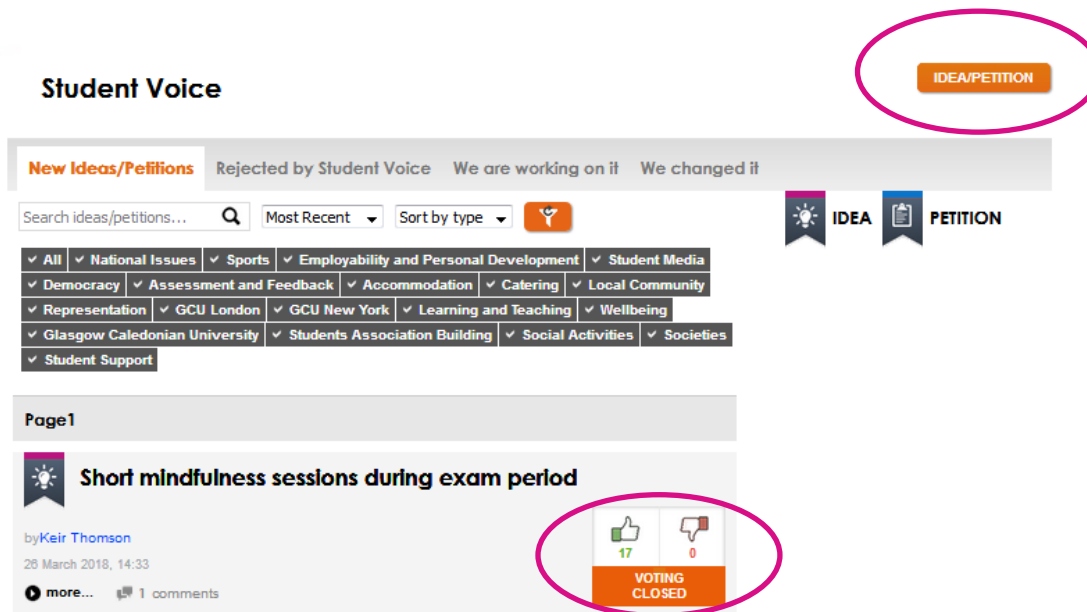
# Student Voice Members



General	<ul style="list-style-type: none"> <li>• Chair</li> <li>• Student Voice Returning Officer (Vice Chair)</li> <li>• Open Places for GCU students</li> </ul>	<p><i>These individuals are classed as Student Voice Officers and are accountable to Student Voice.</i></p>
Representation Officers	<ul style="list-style-type: none"> <li>• Full Time Officers</li> <li>• International Students' Officer</li> <li>• Care Experience Students' Officer</li> <li>• Student Carers' Officer</li> <li>• Ethical and Environmental Officer</li> <li>• Mature and Part Time Students' Officer</li> </ul>	
Academic Reps	<ul style="list-style-type: none"> <li>• Postgraduate Research Experience Representatives</li> <li>• Departmental Reps</li> <li>• Taught Postgraduate (TPG) Student Reps</li> </ul>	
Liberation Officers	<ul style="list-style-type: none"> <li>• Disabled Students' Officer</li> <li>• Black or Minority Ethnic (BME) Students' Officer</li> <li>• Womens' Officer</li> <li>• Lesbian, Gay, Bisexual and Trans plus (LGBT+) Officer</li> </ul>	
Activities Reps	<ul style="list-style-type: none"> <li>• Sports Council Chair</li> <li>• Societies Council Chair</li> <li>• Magazine Editor</li> <li>• Radio Station Manager</li> </ul>	


# Ideas



- Any GCU student can submit an Idea (otherwise known as Motions) on how to improve the Student Experience at GCU.
- **SUBMIT** or **LIKE/DISLIKE Ideas** at [www.GCUstudents.co.uk/ideas](http://www.GCUstudents.co.uk/ideas)
- Ideas with enough support (and are legal) are discussed at Student Voice.
- Ideas are debated and if approved become our Standing Policy for 5 years.
- Student Voice Members can suggest **Improvements** to change the Idea



**Student Voice**


**New Ideas/Petitions** Rejected by Student Voice We are working on it We changed it

Search ideas/petitions...  Most Recent Sort by type 

 **IDEA**  **PETITION**



☒ All ☒ National Issues ☒ Sports ☒ Employability and Personal Development ☒ Student Media  
☒ Democracy ☒ Assessment and Feedback ☒ Accommodation ☒ Catering ☒ Local Community  
☒ Representation ☒ GCU London ☒ GCU New York ☒ Learning and Teaching ☒ Wellbeing  
☒ Glasgow Caledonian University ☒ Students Association Building ☒ Social Activities ☒ Societies  
☒ Student Support



Page 1

 **Short mindfulness sessions during exam period**

by Keir Thomson

26 March 2018, 14:33

 more...  1 comments

 17  0

**VOTING CLOSED**



# Debates

- All members must listen to the Chair and speak only when it is their turn.
- Members must signal that they want to speak by raising their voting card (or Observers their hand).
- Speaking over other members, shouting or using bad or impolite language may lead to the Chair requesting that the member retracts their comments or asking them leaves the room
- All proposals (Ideas, policies or rule changes) will have a proposer who speaks first
- Members will ask to suggest improvements to the proposal
- Members will be able to speak for or against the proposal (including any agreed improvements)
- You will be asked to vote: For, Against or Abstain
- The Chair will advise if the Idea, policy or rule change has passed.





# Holding Officers to Account

Student Voice have a responsibility to scrutinise the work of elected and appointed Officers.

## Full Time Officers

- Written reports from the elected Full Time Officers
- Approval of Full Time Officer Team and Individual Objectives

## Student Voice Officers

- Verbal/Written reports from Student Voice Officers

All Officers failing to submit a report receive an automatic caution.

Any Officer who receives two cautions will automatically receive a Motion of No Confidence vote.

A Motion of No Confidence decides whether an individual remains in office.

# Attendance

- Attendance at all meetings is desirable but not mandatory – your studies must always come first
- When you cannot attend, you must let the Clerk know – this is known as giving your apologies
- All meetings have a required attendance of one third plus one of the membership or the meeting cannot take place – this is known as a quorum of the membership
- If you don't let the Clerk know you will be marked as absent and incur an automatic caution from Student Voice
- Any member who receives two cautions will face a Vote of No Confidence at the meeting of Student Voice



# First Meeting Practicalities



- Agenda, previous minutes and papers available from [www.GCUstudents.co.uk/papers](http://www.GCUstudents.co.uk/papers) normally a week before the meeting.
- Dates of meetings and deadline for submission of agenda items on [www.GCUstudents.co.uk/papers](http://www.GCUstudents.co.uk/papers). Only emergency business will be accepted by the Chair after the deadline.
- Meeting normally takes place in NH208 (Students' Association Building, Level 2, Room 8. It starts at 5pm and finishes at 7pm.
- Light refreshments are provided before meeting at 4.45pm (normally pizza) and members are invited to Re:Union Bar & Grill for drink after meeting.
- Members and Observers are asked to sign in and receiving a voting card. Members write their voting card number next to their name.
- Printed papers are not provided but we use a projector to display all of the important information. Members should let us in know in advance if they have any access requirements.
- If you are unsure of anything please either ask the Chair, Clerk or Student Voice Team Leader before the meeting or ask the Chair at the meeting.

# Key Contacts



<b>Acting Chair</b>	<b>Charlie Kelly</b>	<b>chair@GCUstudents.co.uk</b>
<b>Clerk</b>	<b>Kathryn Collins</b>	<b>kathryn.collins@GCUstudents.co.uk</b>
<b>Student Voice Team Leader</b>	<b>Sara MacLean</b>	<b>studentvoice@GCUstudents.co.uk</b>

