

Students' Association Building

The Students' Association allows students to take part in the various representation aspects that will benefit the student experience such as campaigning, Student Voice, elections, events, etc. For more information, visit our website: www.GCUstudents.co.uk

Level 0

Our 24-Hour Computer Lab has 120 computers, printers and bookable Group Study Rooms and is open 365 days a year, accessible with your GCU Student ID Card.

Book rooms:

www.GCUstudents.co.uk/groupstudyrooms

Level 1 (entrance)

Our Welcome Desk is open 9am to 8pm Monday to Friday during Trimester 1 and 2 and 9am to 5pm during Trimester 3. We can help with any questions.

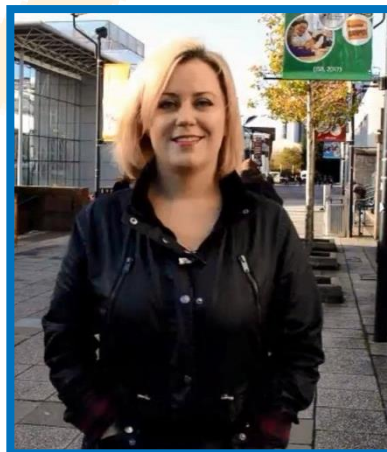
Re:union Bar and Grill is a place for you to eat, drink (hot drinks, beer or wine or soft drinks) or relax between classes.

Our Advice Centre is open 9am to 5pm to support you with any personal or academic problems. If you are too busy to visit in person then they can support you via telephone, 0141 273 1650, or email advice@GCUstudents.co.uk

Level 2

If you need to speak to a Full Time Officer or member of Students' Association staff they are located on Level 2.

Mature Students' Officer



Susan Docherty

My role as your Mature and Part-time Students' Officer is to be responsible for:

Ensuring that Mature and Part-time students at GCU are effectively represented.

To run a campaign where students' needs have been identified.

To inform GCU students on the NUS Mature & Part-time Students' Campaign.

The Mature & Part-time Students' Officer is a full member of Student Voice and is the Chair of the Mature & Part time Students' Group.

In 2017/18, the Mature and Part-Time Students' Group have launched an Easter Egg Appeal for vulnerable people; an age awareness campaign; and various social events to engage with fellow students and have their voices heard.

Mature Students Info Leaflet



Be part of something... **Bigger**

If you were 21+ years old at the beginning of your course, then you are eligible to join the Mature and Part-Time Students' group. We welcome all mature students whether you are full time, part time, undergraduate or postgraduate.

Mature students represent over 40% of all students in Scotland. 68% of these students are between 21-29 years old. 32% of these students are between 30-60 years old.

The Students' Association offers students the opportunity to enhance their student experience through activities. You could participate in any of the following activities:

60+ Societies

35+ Sports Clubs

Radio Caley

The EDIT (Student magazine)

Nightline Volunteering

Wellbeing Volunteering

www.GCUSTudents.co.uk/getinvolved

Representing You

Our main purpose is to represent the needs of students to the university and nationally through the National Union of Students (NUS). Every year, you elect the paid Full Time Officers who you want to represent you and run campaigns. We also have the Mature & Part-time Students' Officer to think specifically about your needs.



You should also have the opportunity to elect Class Reps for your course. Let us know if you are the Class Rep or if you don't have one. We can help.

Email: representation@GCUSTudents.co.uk

Join us on the Mature and Part-Time Students' Facebook group:

www.gcustudents.co.uk/groups/mature-and-part-time-students-group



Find us on:
facebook®

GCU Mature Students group 2017/18

Mature students have many commitments including families and full-time jobs; so, you may think that getting involved with a group takes up too much time that you don't have to spare. That's why we aim to hold events at times and dates to suit everyone including evenings and weekends.

You can attend as many or as little as you like, but by joining a community of students who may have similar life circumstances and work experiences will help support your journey and maintain important contacts for networking opportunities and friendships long after graduation.

So, whether you're looking for new friends, study partners, or simply the reassurance of knowing you're not the only mature student at the university, all can be found here.

www.gcustudents.co.uk/groups/mature-and-part-time-students-group

We look forward to meeting you!