

# What do you need to know about being a Charity Trustee at GCU Students' Association?



# The Students' Association



- The Students' Association is a registered Scottish charity, number SC022887, with legal Charity Purposes
- The Education Act 1994 sets out legal requirements for a students' association and their parent University
- Annual Budget (block grant from GCU and commercial income)
- Students' Association Building in Glasgow and London Office
- 14 staff and 4 paid Full Time Officers
- 16,000 members
- Strategic Plan

# Charitable Purposes

## **The Students' Association has the following purposes:**

- the prevention and relief of poverty of students
- the advancement of citizenship and community development
- the advancement of education
- the advancement of the arts, heritage, culture and science
- the advancement of health amongst students
- the organisation of recreational activities for students who have need of them by reason of financial hardship or other disadvantage
- the promotion of religious or racial harmony
- the promotion of equality and diversity
- the promotion of charitable fundraising activities

# The Bigger Plan 2020



[www.GCUstudents.co.uk/strategicplan](http://www.GCUstudents.co.uk/strategicplan)



1. Where everyone belongs
2. Where everyone can grow
3. Where everyone can work together
4. Where everyone can try new ideas



# Awards



[www.GCUstudents.co.uk/awardwinning](http://www.GCUstudents.co.uk/awardwinning)



# Trustees



[www.GCUstudents.co.uk/trusteeboard](http://www.GCUstudents.co.uk/trusteeboard)

- 4 Full Time Officer Trustees (elected)
- 4 Student Trustees (appointed >2 years)
- 4 External Trustees (appointed for 3 years)



Each trustee type brings difference expertise to the Board.

Full Time Officers automatically become trustees by virtue of their election. Not everyone can legally be a trustee (Trustee Declaration Form).

Trustee Role Description.  
Trustee Code of Conduct.



# Trustee Legal Duties

A charity trustee must:

1. Act in the interest of the charity
2. Operate in a manner consistent with the charity's purposes
3. Act with due care and diligence
4. Ensure that the charity complies with the provisions of the 2005 Charity Act and other relevant legislation

Collective legal responsibility.

Trustee Indemnity Insurance.

<http://www.oscr.org.uk/charities/managing-your-charity/trustee-duties>

# Trustee Board Remit



- Has ultimate responsibility for setting the strategic direction of the Students' Association, ensuring it is solvent, well-run, meets its mission, vision and values and delivers its charitable purposes
- Must ensure that the Students' Association complies with its Constitution, the Education Act 1994, University Code of Practice and relevant charity law.
- Must maintain and regularly review the Students' Association internal controls, performance reporting, policies and procedures
- Must act prudently to protect the assets and property of the Students' Association, and ensure that they are only used to deliver the purposes of the charity
- Must regularly review the risks to which the Students' Association is subject, and take action to mitigate risks identified
- Must uphold and apply the principles of equality and diversity, and that the Students' Association is fair and open to all sections of the membership in all its activities

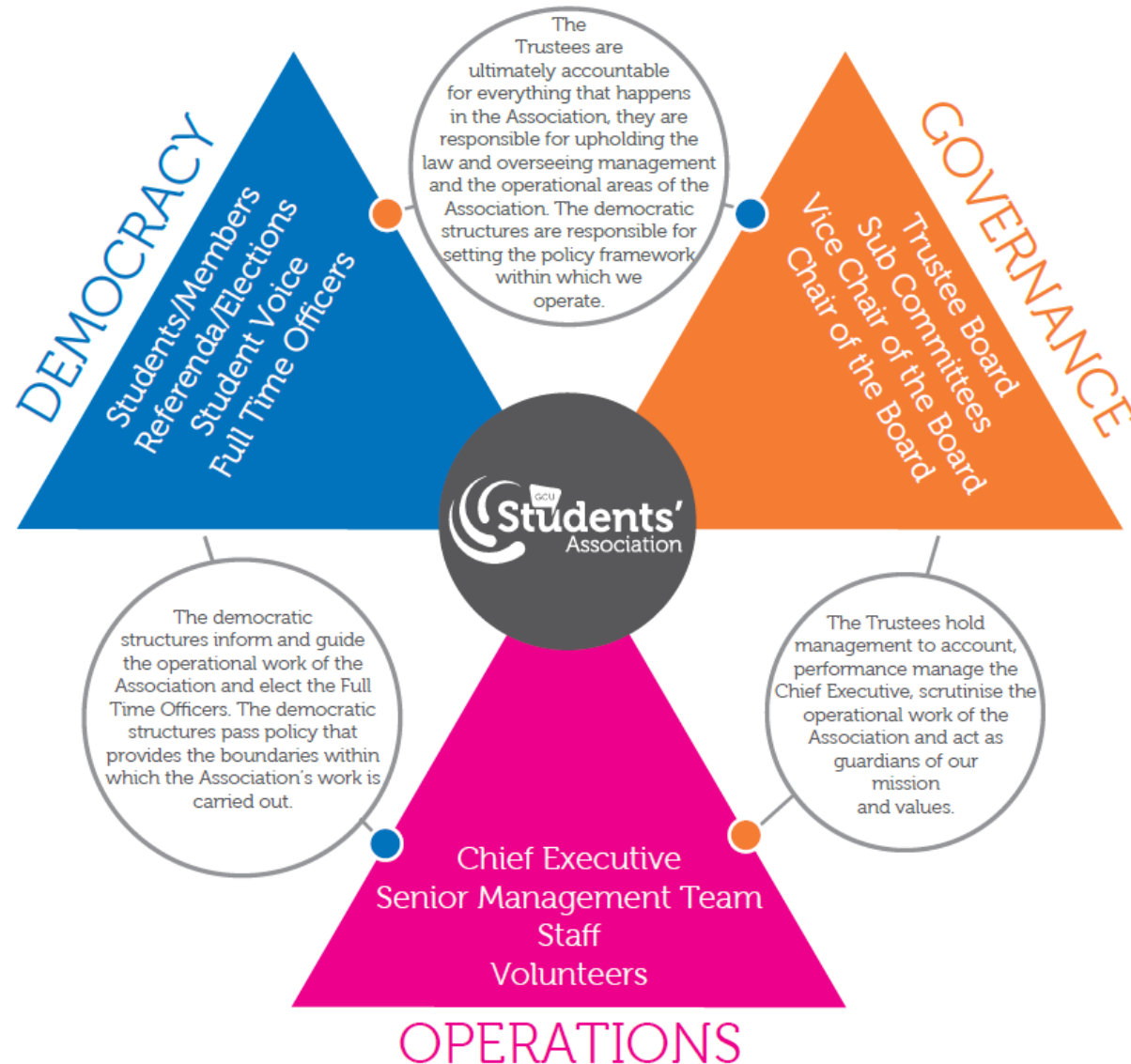


# Strategic not Operational

- In this instance you would say how the baby should be held.
- You wouldn't actually hold it!



# Governance, Democracy and Operations



# What support is available?

- Trustee Board Induction
- Trustee Board Training
- Chief Executive and Senior Managers
- Clerk to the Trustee Board
- External Trustees
- National Union of Students (NUS)



# Further Information



[www.GCUstudents.co.uk/keyinformation](http://www.GCUstudents.co.uk/keyinformation)

- Constitution
- Impact Reports
- Audited Accounts
- Minutes

[www.GCUstudents.co.uk/aboutus](http://www.GCUstudents.co.uk/aboutus)

- Governance Structure
- Staff

